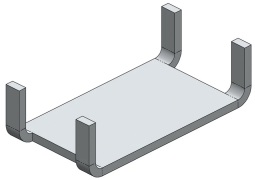


# NVENT ERIFLEX FLEXBUS HCBC PLATE



## CERTIFICATIONS



## FEATURES

Rigid tinned copper part provides strong electrical contact to maintain braid expansion during compression

HCBC Plate allows Flexbus Conductor insulation to overlap the connection palm

Tinned copper allows for copper or aluminum conductor connections

Installs quickly and easily

RoHS compliant

## SPECIFICATIONS

**Material** Copper

**Finish** Tinned

Catalog Number	Item Name	A	B	C	D	Thickness(T)	Conductor Size	Unit Weight
FLEXPLATE 50	508180	1.969"	2.480"	1.772"	1.260"	0.197"	220 mm <sup>2</sup> , 360 mm <sup>2</sup> , 545 mm <sup>2</sup> , 640 mm <sup>2</sup>	0.353 lb
FLEXPLATE 100	508181	3.937"	2.480"	1.772"	1.614"	0.197"	960 mm <sup>2</sup> , 1280 mm <sup>2</sup> , 1810 mm <sup>2</sup>	0.705 lb

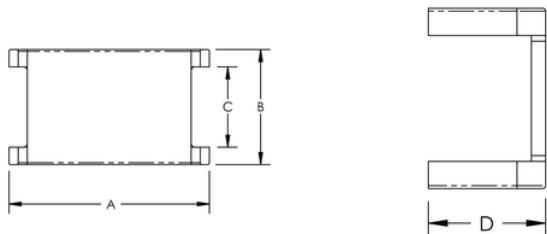
## ADDITIONAL PRODUCT DETAILS

---

It is mandatory to use the HCBC Clamp associated with the HCBC Plate for proper Flexbus Conductor connection.

## DIAGRAMS

---



## WARNING

---

nVent products shall be installed and used only as indicated in nVent's product instruction sheets and training materials. Instruction sheets are available at [www.nvent.com](http://www.nvent.com) and from your nVent customer service representative. Improper installation, misuse, misapplication or other failure to completely follow nVent's instructions and warnings may cause product malfunction, property damage, serious bodily injury and death and/or void your warranty.

### North America

+1.800.753.9221

Option 1 – Customer Care

Option 2 – Technical Support

### Europe

Netherlands:

+31 800-0200135

France:

+33 800 901 793

### Europe

Germany:

800 1890272

Other Countries:

+31 13 5835404

### APAC

Shanghai:

+ 86 21 2412 1618/19

Sydney:

+61 2 9751 8500



Our powerful portfolio of brands:  
nVent.com **CADDY ERICO HOFFMAN RAYCHEM SCHROFF**  
**TRACER**